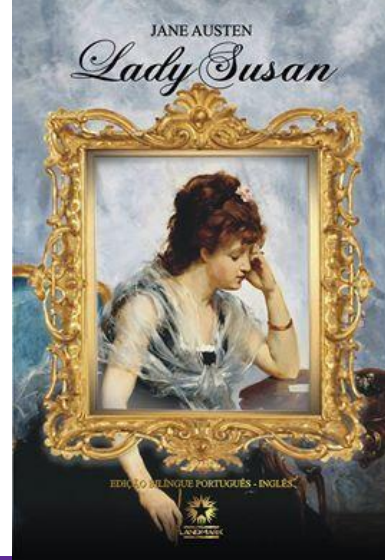


# *The Talk:*

*Lady Susan* the Novella and  
*Love & Friendship* the Film

JASNA AGM  
Huntington Beach, CA  
October 2017



# The Presenters

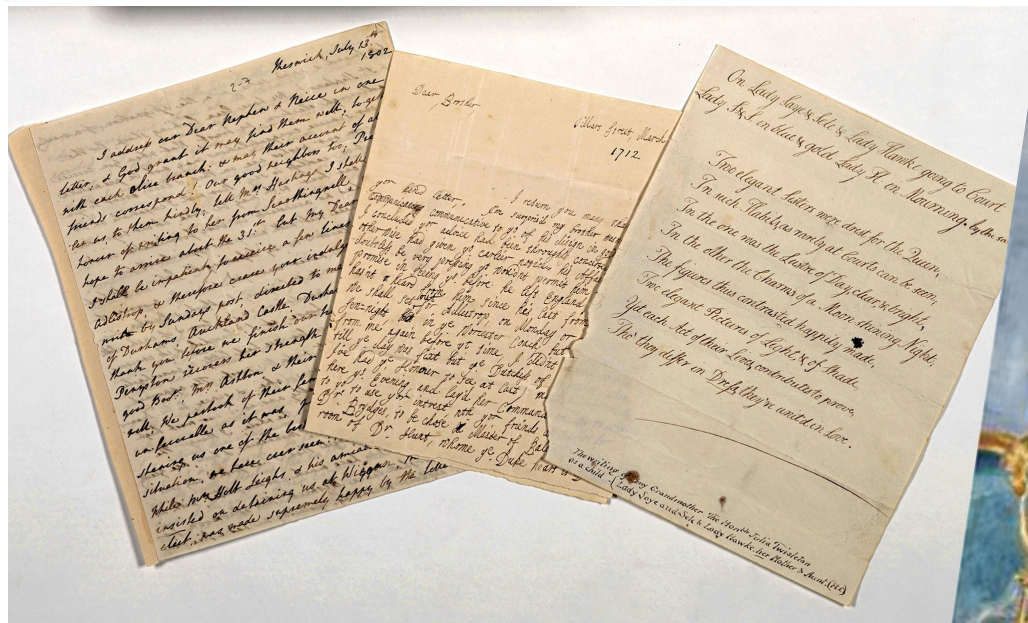
Pauline  
Beard



Jennifer  
Snoek-  
Brown



# Epistolary Form



# Letters to Film



“It’s so funny and clever... there are a lot of good things in it, but it’s kind of in an inaccessible form... I could pull out the diamonds and put them in a setting.”

~Whit Stillman, 2016 interview

# *The Talk*

## **Starter discussion questions:**

- Do you see benefits/drawbacks of the epistolary form?
- Jane Austen abandoned the epistolary technique ... can one appreciate why?
- Do you feel something is gained or lost in the film translation?
- Do you see areas where the film changes the perspectives?
- Does the film add needed perspectives by including new characters?

# References

Slides 1 and 3: Portuguese cover of the novella *Lady Susan* by Jane Austen.

Slides 1 and 4: Poster for *Love & Friendship*, dir. Whit Stillman, 2016.

Slide 3: “Jane Austen’s Family Letters” image from The Huntington Library, Art Collection, and Botanical Gardens. From Allison Flood’s “[Jane Austen family letters offer ‘deeply personal’ insight into author’s world](#),” *The Guardian*, 2 Feb. 2015.

Slide 4: Alter, Alexander, “[Whit Stillman Discusses Austen’s Sense and His Sensibility](#),” *New York Times*, 2 May 2016.

*Thank You!*